

# ICF ITO SEMINAR

Explanation and Operation of New Rules

# THE RULE CHANGES

The new rule changes:

Introducing time penalty as an option for breaking the rules.

So far – apart from making a false start – the only option was disqualification.

The racing regulation itself has not been changed.

- a) Competitors must race fairly and not disregard the honourable nature of the marathon rules or they can be disqualified or receive a time penalty

## b) Not racing the correct course

*Missing turn buoys (own mistake):*

Small Advantage: Penalty of 15 seconds.

Big Advantage: Disqualification.

If missed buoy caused by a Collision:

No Penalty

The competitor who caused the collision can be penalised.

## c) Collision or damage

Any competitor who hits or damages another boat or moves of the racing line without reason may be penalised.

No problem: No penalty

Minor Problem: Penalty of 30 seconds.

Major Problem: Disqualification.

## f) Wash hanging on another Class

First warning: Time penalty 30 seconds.

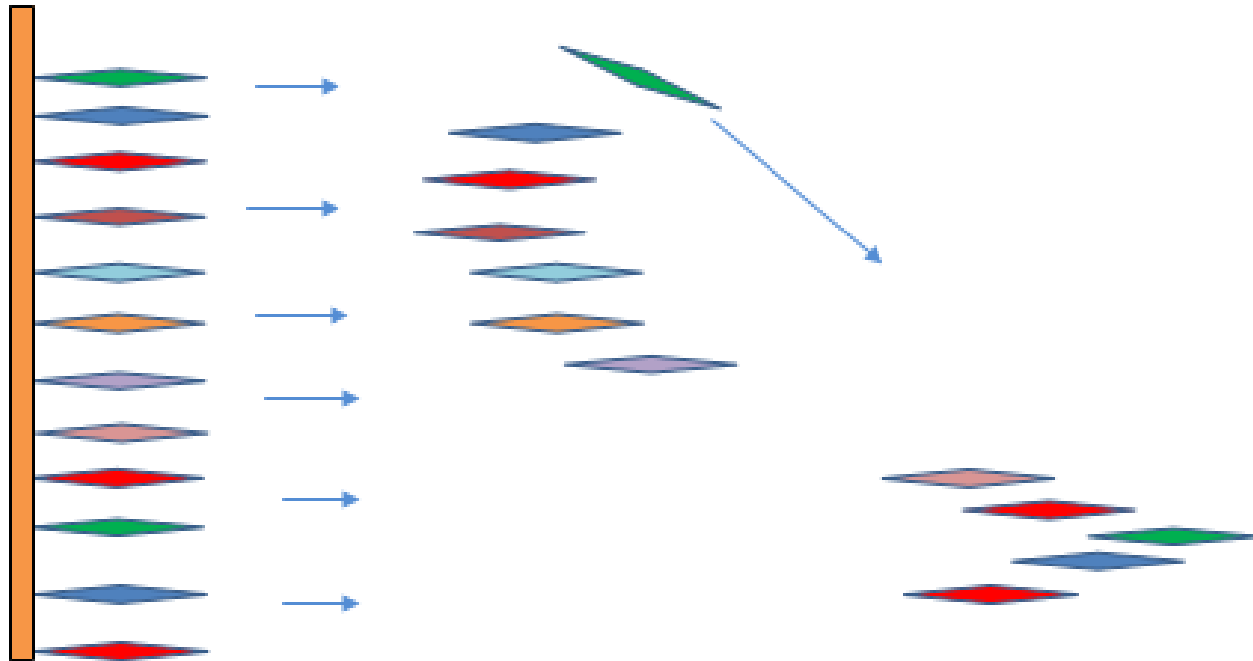
Second warning: Disqualification.

Major advantage: Disqualification

## g) Handling of Penalties

- Chief Course Umpire (CCU) will apply the time penalties.
- ITO to report offence & recommended penalty **immediately** to CCU
- ITO to make a report of incident.
- Penalty will be taken in Penalty Box at portage.
- **Time Penalties not subject to appeal.**
- Disqualifications are decided by the Competition Committee.

## Racing at the Start



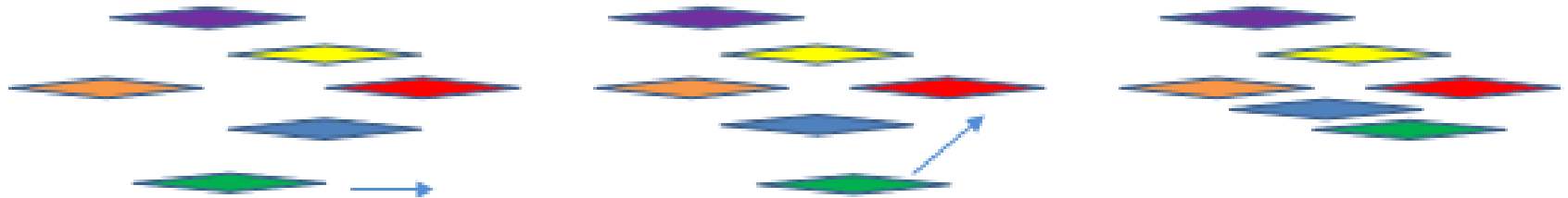
Boats should not deviate from a straight line immediately after the start. In this case the green boat could be penalised if a major collision/problem arise.



# GROUP RACING AND OVERTAKING

An overtaking boat must keep clear of other competitors.  
In a group all boats must keep clear of each other at all times.  
This applies everywhere on the course including the portage  
and turns.

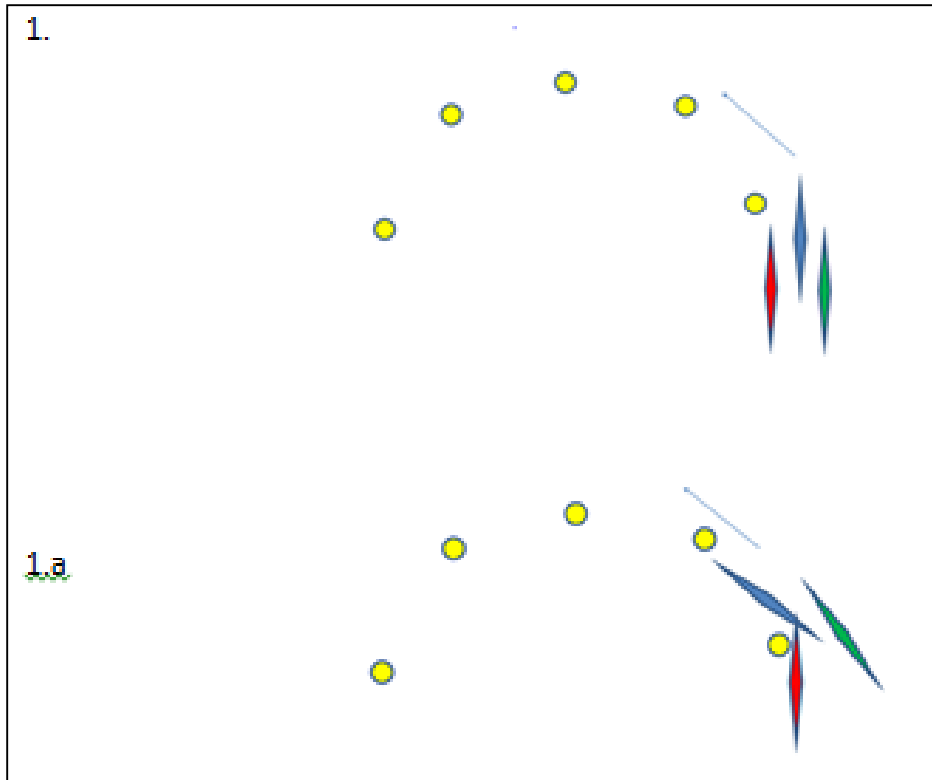
## Squeezing



In the diagram above the outside green boat cannot paddle forward and cut in sharply onto the lead boats wash. If this happens and a major collision is caused the green boat can be penalised.

(Aggressive paddling)

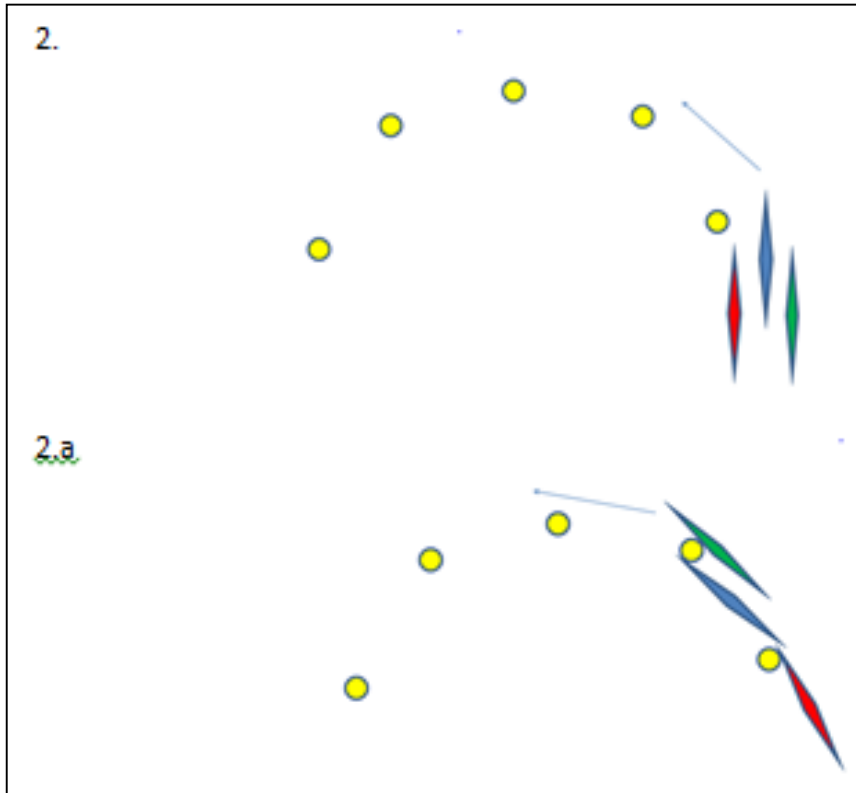
# TURN COLLISION



If a group is making a turn as in diagram 1 and the blue boat leaves no space for the red boat as in diagram 1a and the red boat hits the back of the blue boat making it capsize or miss one of the buoys then the red boat is in the wrong and should be penalised.

The blue boat is allowed to take the racing line and if there is no space the red boat should drop back without hitting the blue boat. If the blue boat misses a buoy then it should not be penalised.

## TURN COLLISION

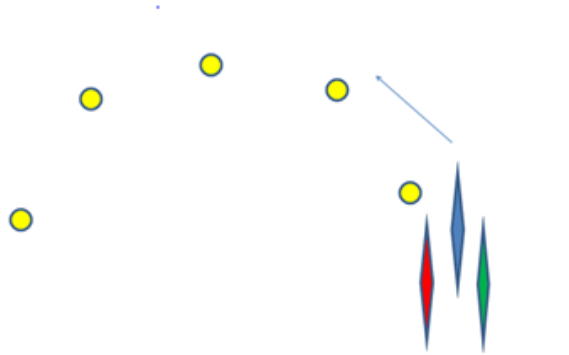


If a group is making a turn as in diagram 2 and the green boat overtakes the blue boat and leaves no space for the blue boat as in diagram 2a making the blue boat hit the buoy, capsize or miss a buoy then the green boat should be penalised.

The green boat is the overtaking boat and should keep clear. If the blue boat misses a buoy then it should not be penalised.

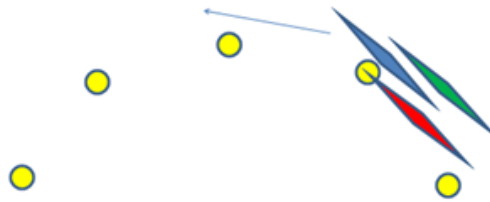
# TURN COLLISION

3.



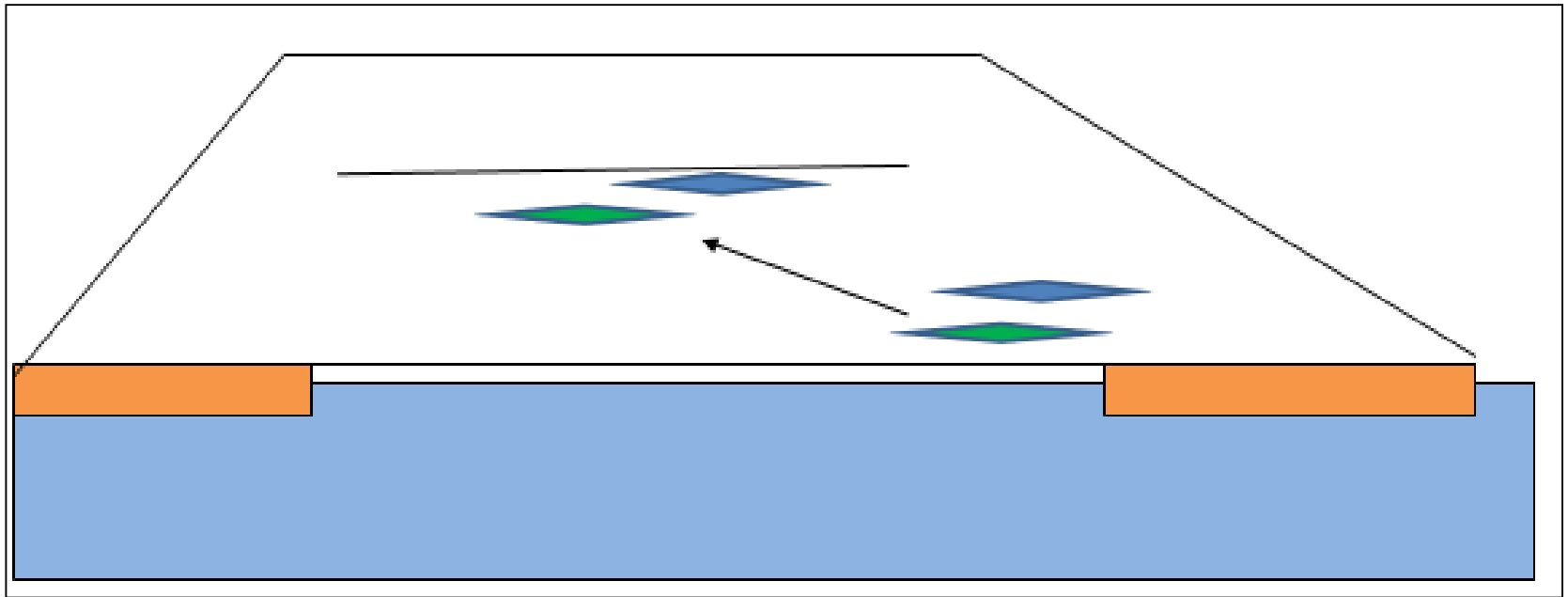
If a group is making a turn as in diagram 3 and the blue boat leaves no space for the red boat as in diagram 3a and the red boat misses the buoy, then the red boat should be penalised.

3.a



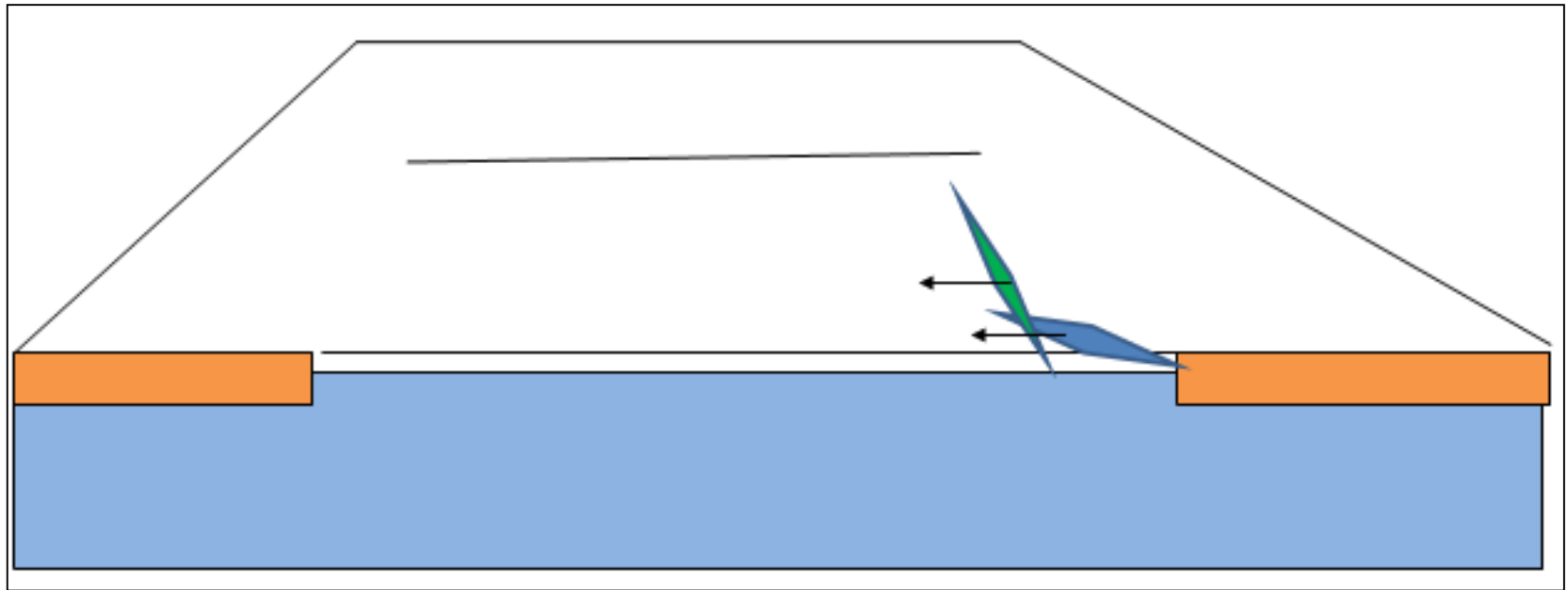
The blue boat is allowed to follow the racing line and if there is not enough space the red boat should drop back without hitting the blue boat

## PORTAGING



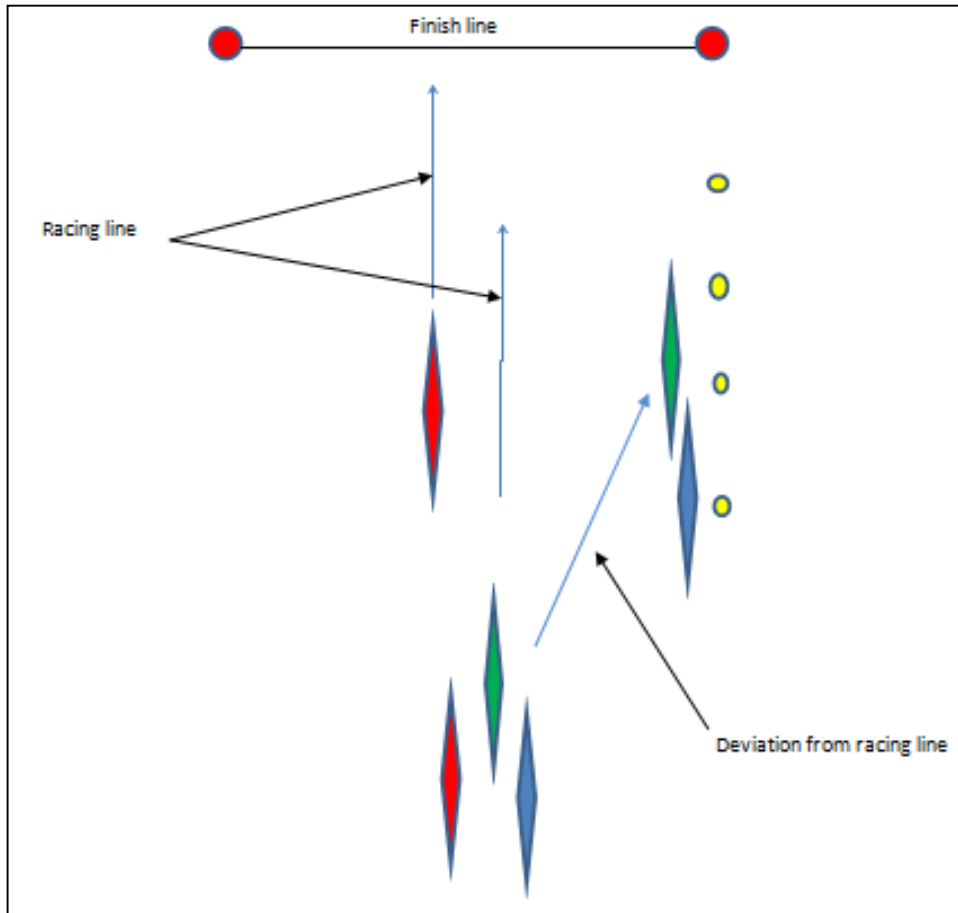
Competitors must run a straight line on the portages. It is not acceptable to block another competitor or force them off line as the green boat is doing. The green boat should be penalised.

# PORTAGING



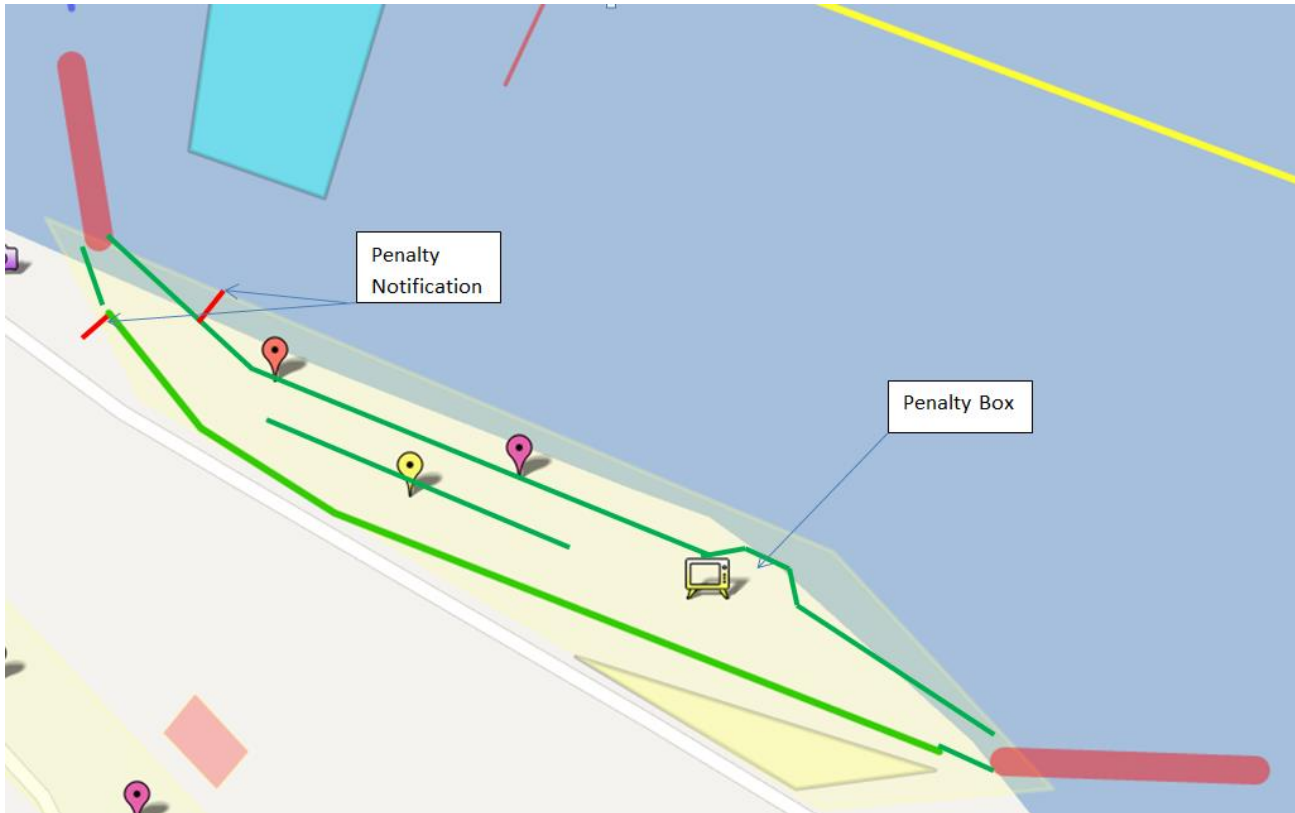
Competitors must not try and push past competitors while boats are making contact. It is not acceptable to turn another competitors boat and spin them off line as the blue boat is doing. Also the green boat should run without boat blocking the path of other boats or deviate his or her path to block another competitor.

# FINISHING



In the diagram the green boat has moved off the racing line and obstructed the blue boat stopping it from taking a straight line to the finish. The green boat is not racing fairly and should be penalised. Paddlers must take a straight line to the finish and not try and force other competitors off their line. The green boat should be disqualified

# PENALTY NOTIFICATION AND PENALTY BOX



When a penalty is to be taken the competitor's number will be displayed on notice boards on each side at the start of the portage.

The competitor must stop at that portage in the penalty box provided.

An ITO will time the penalty period and then tell the competitor to continue.